



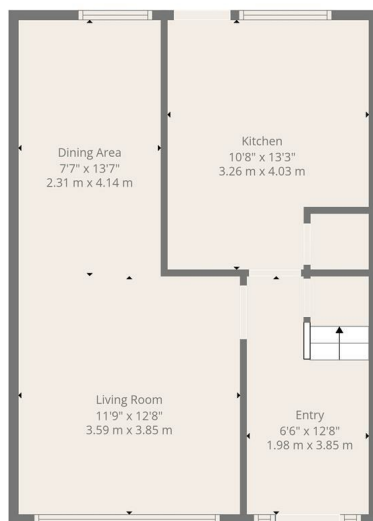
HEMMINGS HOMES

OFFERS OVER

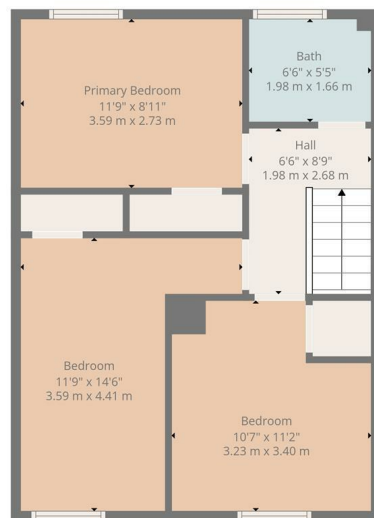
£155,000

Conan Court

Glasgow, G72 7YU



Ground Floor

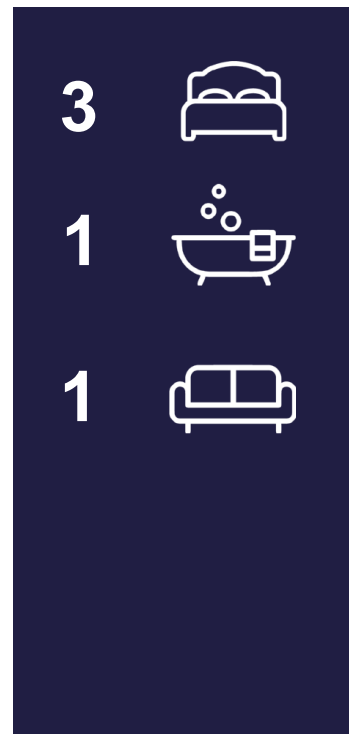


1st Floor




TOTAL: 972 sq. ft. 90 m²
Ground floor: 487 sq. ft. 45 m², 1st floor: 485 sq. ft. 45 m²
EXCLUDED AREAS: WALLS: 91 sq. ft. 8 m²

Floor Plan Created By Cubicasa App. Measurements Deemed Highly Reliable But Not Guaranteed.



Agents Note: Whilst every care has been taken to prepare these particulars, they are for guidance purposes only. All measurements are approximate and are for general guidance purposes only and whilst every care has been taken to ensure their accuracy, they should not be relied upon and potential buyers/tenants are advised to recheck the measurements

Energy Efficiency Rating		Current	Potential
Very energy efficient - lower running costs			
(92 plus)	A		
(81-91)	B		
(69-80)	C		
(55-68)	D	76	82
(39-54)	E		
(21-38)	F		
(1-20)	G		
Not energy efficient - higher running costs			
Scotland		EU Directive 2002/91/EC	



HEMMINGS HOMES

OFFICE ADDRESS

376 Brandon Street
Motherwell
North Lanarkshire
ML1 1XA

OFFICE DETAILS

01698 263413
enquiries@hemmingshomes.co.uk
hemmingshomes.co.uk